

J AND M CONTRACTORS PRESENTS...

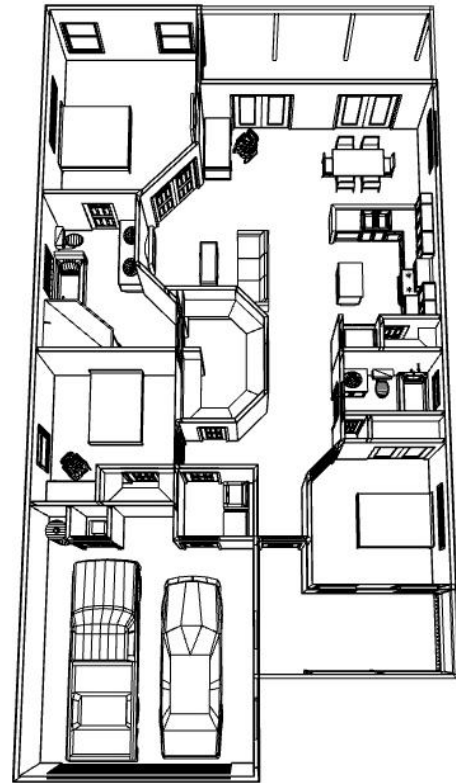
**THE MADISON  
AT WILLOW OAK PLANTATION**



**Features Include:**

\$229,500

- 1500 sq. ft. Heated and Cooled, 2133 sq. ft. Total
- 3 Bedroom, 2 Bath, 2 Full-Sized Car Garage
- 12 ft. ceilings in Great room / Dining room, 9 ft. Elsewhere
- Coffered ceiling in Master Bedroom, Access to Rear Porch
- Large Master Bath with Bathtub & 2 Headed Shower
- Large Master Closet with Easy Access to Laundry Room
- Highly Energy Efficient Johns Manville Spider™ Insulation
- Vinyl Low E Windows Save on Energy Bills
- Hardiplank Lap Siding, 30 Year Architectural Shingles
- Upgraded Cabinets & Countertops Throughout Home
- Microwave, Dishwasher, Refrigerator, & Oven Included
- Large Front & Rear Porches are Great for Relaxing
- Completely Insulated Garage w/ Sealed & Painted Floor
- Professional Irrigation & Low Maintenance Landscaping
- Stainless Steel Appliances & Central Vacuum Included
- Quality Built with Attention to Detail, Many Extras!



View Floor Plan on Back!

Visit us online at [www.JandMContractors.com](http://www.JandMContractors.com) for more plans and pictures!



General Contractors · Construction Management · Residential Design

CGC 023743

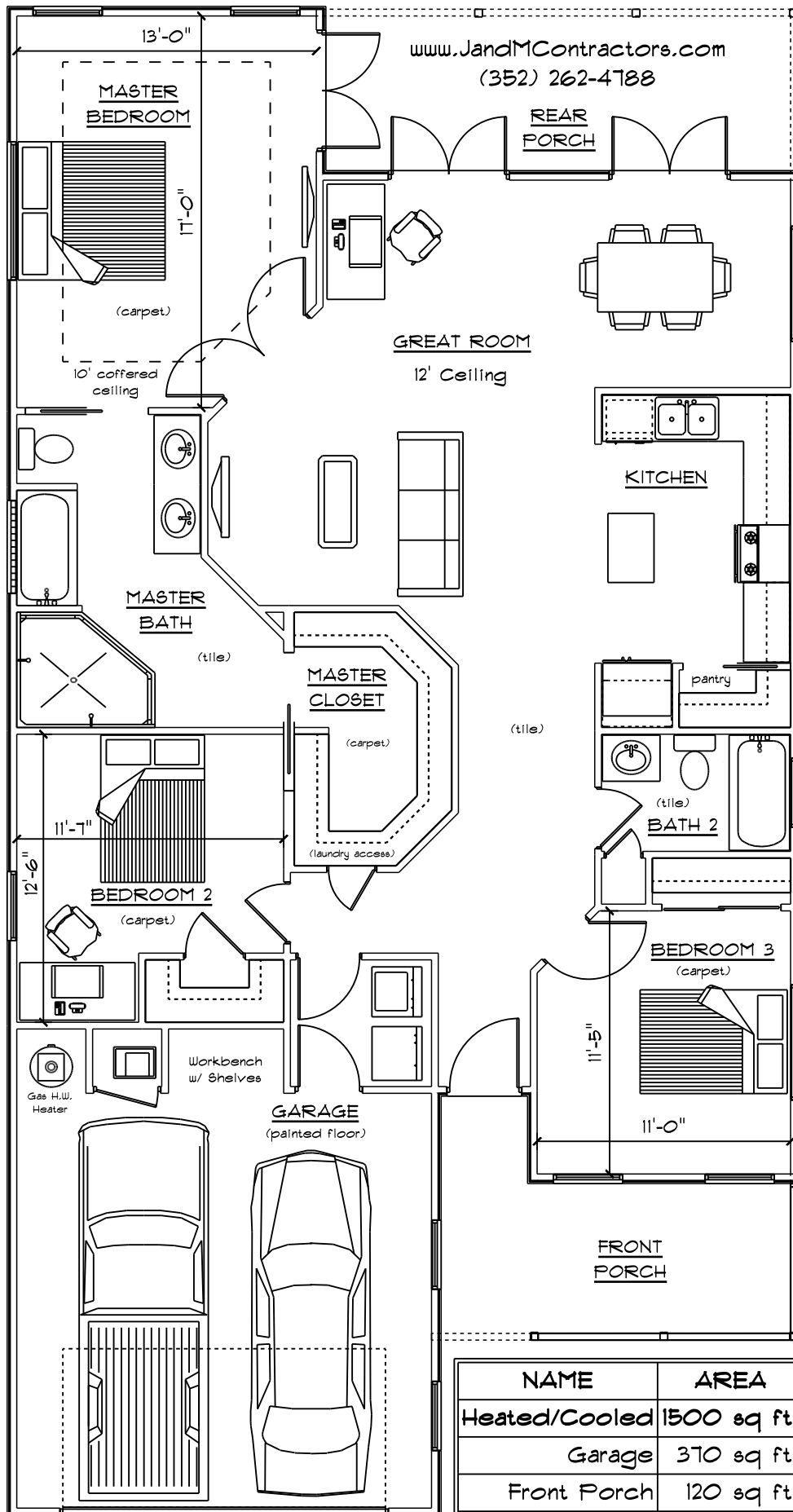
Address 3324 W. University Ave. #338  
Gainesville, FL 32607

Phone (352) 262-4788

Fax (352) 379-5974

E-mail [info@jandmcontractors.com](mailto:info@jandmcontractors.com)

Website [www.JandMContractors.com](http://www.JandMContractors.com)



© 2007 J and M Contractors - All rights reserved.  
State of Florida Certified General Contractor.  
License #CGC023743

NAME	AREA
Heated/Cooled	1500 sq ft.
Garage	370 sq ft.
Front Porch	120 sq ft.
Rear Porch	143 sq ft.
<b>TOTAL SQ. FT.</b>	<b>2133 sq ft.</b>